

INTECH NDE

Inspection Solutions



ELIOS 3

TECHNICAL SPECIFICATIONS





www.intechnde.com

TECHNICAL SPECIFICATIONS AIRCRAFT

Index

Aircraft	04	Thermal Camera	09
LiDAR Payload	06	Lighting System	10
Smart Battery	06	Operational Safety & Crashworthiness	11
Payload Chassis	08	Aircraft Transmission	12
Main Camera	08		

www.intechnde.com

■ AIRCRAFT

Configuration	Ducted fan quadcopter
Data interface	USB-C port using Inspector (requires drone to be powered by its battery!)
Dimensions	48cm wide; 18.9 in 38cm high; 13.8 in
Flight control sensors	IMU, magnetometer, barometer, lidar, 3 computer vision camera and ToF distance sensor
Flight modes	ASSIST - Stabilized mode ATTI - Attitude mode SPORT - Sport mode
Flight Time E3 base	>12min30s*

Flight Time E3 base + lidar mapping payload	>9 min**
Ingress Protection	Base platform + basic inspection payload: Splash and dust resistant design, equivalent to at least IP44 LIDAR Payload: IP68
Mass E3 base	1900 g +/-10g; < 4,18 lbs Includes battery, payload & protection
Mass E3 base + lidar mapping payload	2350 g +/-15g; < 5,2 lbs Includes battery, payload & protection and lidar payload

Materials	Carbon fiber - kevlar composites, magnesium alloy, aeronautical grade aluminum, high-quality thermoplastics
Max ascent / descent Speed	2 m/s ; 6.6 ft/s (Assist / Atti modes)
Max horizontal speeds in different flight modes and configurations	2 m/s (Assist mode) ; 6,6 ft/s 5 m/s (Attitude mode) ; 16.4 ft/s 7 m/s (Sport mode) ; 23 ft/s
Max Take-off mass	2500 g (E3 base + 600g / E3 LIDAR + 150g)
Max Wind Resistance	5 m/s (Assist mode) ; 16.4 ft/s 7 m/s (Sport mode) ; 23 ft/s

Motor life time	50h (Test run to 120 hours, motors reached 100h with negligible degradation so specification is 50% of nominal life)**
Motor type	4 fast reversing electric brushless motors
Noise Level	83 dB(A) with lidar
Onboard computer	Nvidia Xavier NX onboard computer with custom linux OS
Operating temp.	0 °C to 50 °C* ; 32 °F to 122 °F Valid for batteries pre-condition between 10°C and 40°C

*In ideal flight conditions, without a payload mounted on the payload bay, with a new battery.

**In ideal flight conditions, with a new battery

■ AIRCRAFT

Propeller life time	10h
Propellers	4 propellers, 5 inches
Standby time on full battery	5000h or ~7 months

■ LIDAR PAYLOAD

Lidar sensor	Ouster OS0-32 beams sensor
---------------------	----------------------------

■ SMART BATTERY

Battery change time	< 10s by means of plug and play battery mechanism
Battery life time	50 flights
Battery shelf time	250 days when stored at ~20°C and at 50% SOC
Battery Type	<p>LiPo 6S HV Smart Battery:</p> <ul style="list-style-type: none"> - LED, button and user interface for SOC monitoring, etc - Improved safety during charge cycle (protection for: overcharge, overcurrent, overvoltage, over/under-temperature) - Accurate state-of-health and state-of-charge estimation - Plug-and-play charging - Self-balancing - Storage self-discharge - Cycle counter - Battery ID

Charger	<p>Elios 3's plug and play Smart Battery Charger</p> <ul style="list-style-type: none"> -> 150VA Reactive power input -> 100-240V AC voltage input -> 1.5A AC max current input
Charging Temperature	0°C - 45°C ; 32°F - 113°F
Charging time	1h
Compliance	Approved for carry-on luggage. Complies with IATA Dangerous Good Regulation.
Energy	99.2Wh
Net Weight	620 g ; 1.4 lbs

Nominal Voltage	22.8 V
Operating Temperature	10 - 40°C ; 50°F - 104°F
Rated Capacity	4350 mAh
Safety alarm	Audible warning when battery voltage is low

■ PAYLOAD CHASIS

Camera Pod Downward tilt	-90 degrees
Camera Pod Upward tilt	+90 degrees
Payload head	Damped for vibrations

■ MAIN CAMERA

Control modes	Auto mode with manual EV compensation
----------------------	---------------------------------------

File Storage	MicroSD card (onboard the aircraft) Max capacity: 128 GB Recommended model: Sandisk Extreme micro SDXC UHS-I V30
Ground sample distance	minimum 0.18mm/pix at 30cm
Lens	2.71 mm focal length Fixed focal
Movie FOV	114° horizontal, 131° diagonal
Photo Formats	JPG
Photo FOV	119° horizontal, 149° diagonal

Photo Recording Resolution	4000 x 3000, up to 40 pictures during flight
Sensor	1/2.3" CMOS Effective Pixels: 12.3 M Sensitivity: Optimized for low light performance
Supported File System	FAT32 for cards up to 32 GB, exFAT for cards bigger than 32 GB. Up to 128GB card size.
Total vertical FOV	approximately 244° including camera tilt including 180°C without obstruction
Video Formats	MOV
Video Recording Resolutions	4k Ultra HD: 3840 x 2160 at 30 fps FHD: 1920 x 1080 at 30 fps

Video Streaming Resolution	FHD: 1920 x 1080 at 30 fps
-----------------------------------	----------------------------

■ THERMAL CAMERA

Lens	FOV 56° x 42°, Depth of field 15cm to infinity
Sensitivity (NEdT)	<50 mK
Sensor	Lepton 3.5 FLIR
Video Recording Resolution	160 x 120 at 9 fps
Wavelength (LWIR)	8-14 μm

■ LIGHTING SYSTEM

Control	From remote controller, adaptive light beam controlled by camera pitch
Light Output, extreme	Temporary Peak Power: - max 100W - 16000 Lumen
Light Output, Nominal	Normal mode - 20W default, 1x E2 max illumination. >> Working up to >50°C without thermal throttling - 40W boost, ~2x E2 max illumination >> Working up to 30°C without thermal throttling

Light Output, Nominal	Dust mode - default is equivalent to 1x E2 max illumination. - Throttling temperature >30°C"
Modes	Normal mode (4x panels used) Dustproof lighting (2x outer panels used only) Selective/oblique lighting (left or right side only)
Type	High-efficiency LEDs for even lighting in front, top and bottom, optimized for low impact of dust on picture quality.

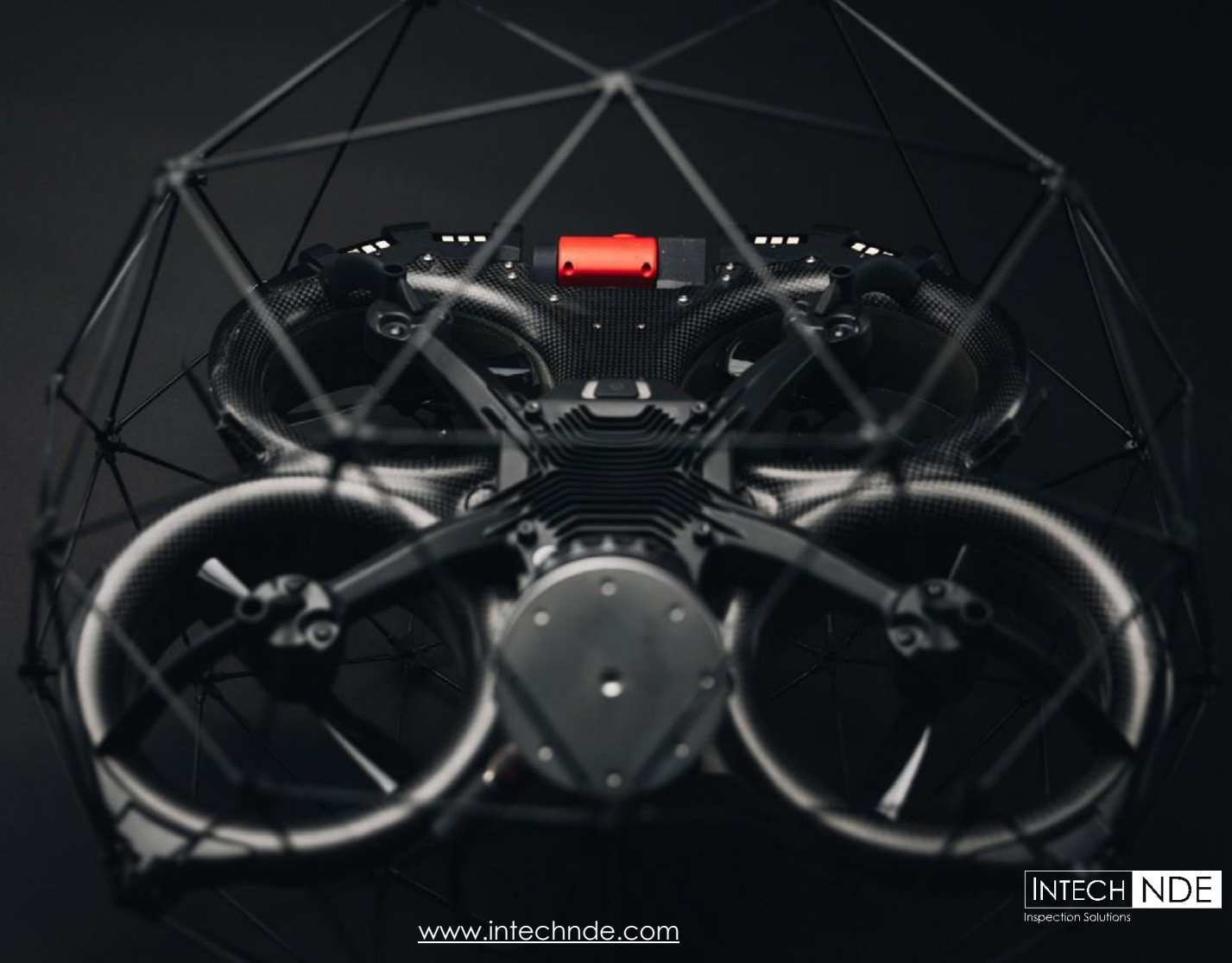
■ OPERATIONAL SAFETY & CRASHWORTHINESS

Battery latch safety alarm	Sensor embedded in battery mechanism to alarm customer with visual warning on drone and in Cockpit if battery lever is not closed correctly.
Fail safe	Auto-landing on signal lost
Max safe collision speed in different drone configurations and flight modes	< 2m/s in frontal collisions - for at least 100 collisions without damages < 2.4m/s in all spherical directions - for at least 100 collisions without damages - to avoid too high accelerations on lidar payload -> Full speed collisions in ASSIST on flat walls are safe < 3m/s to avoid structural damage to drone -> Fulls speed collisions in ATTI and SPORT mode will kill the drone

Navigation lights	One RGB navigation light on the rear of the drone
Protection cage	Carbon fiber cage with soft coating, modular subcomponents for maintenance ease, thermoplastic elastomer suspensions, bottom opening dimensioned for easy battery access, front opening dimensioned for easy payload access.

■ AIRCRAFT TRANSMISSION

Designation of emissions	Downlink: max 18Mbps -> Video: 1080p@30fps -> FMU data Uplink: max 3Mbps -> RC commands
Frequency band Tx	2.4GHz ISM band (2400MHz - 2483.5MHz)
Maximum output power	2.4 Ghz ≤ 20 dBm





TECHNICAL SPECIFICATIONS GROUND CONTROL STATION

Index

Remote Controller	16
Remote Controller Transmission	17
Tablet	17

■ REMOTE CONTROLLER

Battery	6700 mAh 1S
Battery Charger Voltage & power input	12 V / 24 W
Battery Charging temperature range	10°C to 35°C
Battery Charging time	<2h30min for 0-80% at room temperature <4h for 0-100% at room temperature
Battery life time	300 cycles
Controls	Aircraft control and payload settings

Max Transmission Distance	Up to 500m in direct visual line of sight
Operating temp.	-10 °C to 45 °C
Operating time on full battery	>5h at room temperature
Options	Optional remote controller (camera operator) with video stream reception on a secondary screen, and dual control of camera settings.
Output port	USB-c
Weight	1760g with tablet holder

■ REMOTE CONTROLLER TRANSMISSION

Designation of emissions	Downlink: max 18Mbps -> Video: 1080p@30fps -> FMU data Uplink: max 3Mbps -> RC commands
Frequency band Tx	2.4GHz ISM band (2400MHz - 2483.5MHz)
Maximum output power	2.4 Ghz ≤20 dBm
Radio link Encryption	128 bit aes-ctr as per the LTE spec

■ TABLET

Battery Charger	USB fast Charger 5V /15W
Charging temp.	0°C to 40 °C
Charging Time	3h (with fast charger provided with tablet) 5h (with normal charger provided by Flyability)
Model	Samsung Galaxy Tab S7 or S8
Operating temp.	-10 °C to 50 °C
Weight	500 g



TECHNICAL SPECIFICATIONS ACCESSORIES & SOFTWARE

Index

Transport Case	20
Cockpit Software	20
Inspector Software	21

■ **TRANSPORT CASE**

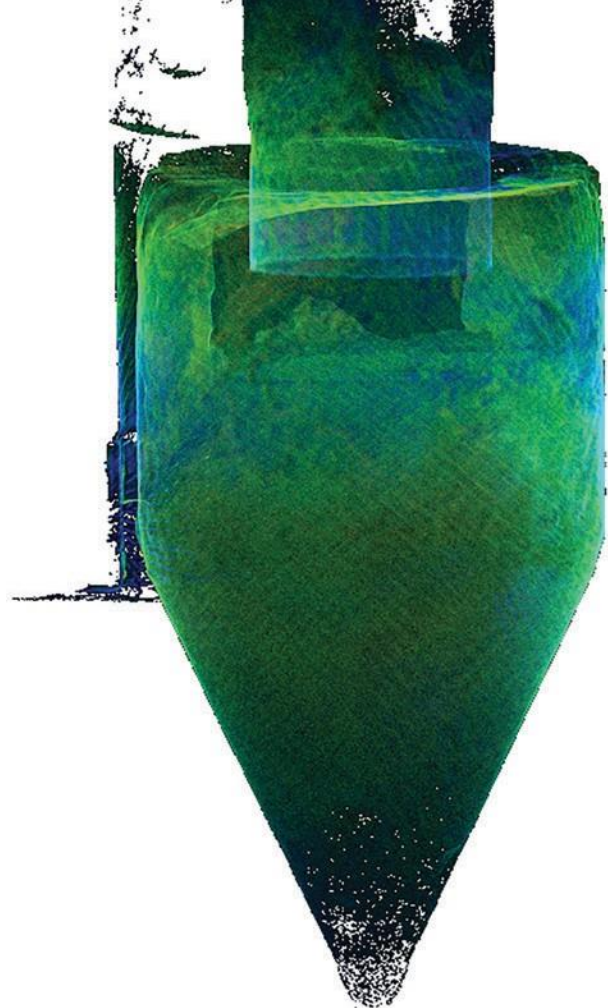
Compliance	NOT IATA compliant for checked-in luggage
Dimensions	65 x 45 x 55 cm
Weight	13 kg

■ **COCKPIT SOFTWARE**

Features	Real time video and UAV telemetry, status visualization (remaining battery, payload settings, warnings, etc.), control payload settings and various configurations.
Operating system	Android 11/12 developed for Samsung Tab S7 / S8 tablet

■ **INSPECTOR SOFTWARE**

Operating system	Windows 10/11 (64 bits)
-------------------------	-------------------------



For more information on any of these products please visit

www.intechnde.com

Email: Sales@intechnde.com

Call any of 3 location below:

British Columbia

140 - 8851 Beckwith Road
Richmond, B.C.
V6X 1V4

Tel: 604 276 8006
Fax: 604 276 8725
Toll Free: 1 800 677 8884

Alberta

6211 Roper Road
Edmonton, Alberta
T6B 3G6

Tel: 780 448 9575
Fax: 780 466 1280
Toll Free: 1 888 576 7756

Ontario

#48 1200 Speers Road
Oakville, Ontario
L6L 2X4

Tel: 289 430 0286
Fax: 780 466 1280

